

Архангельск (8182)63-90-72
 Астана (7172)727-132
 Астрахань (8512)99-46-04
 Барнаул (3852)73-04-60
 Белгород (4722)40-23-64
 Брянск (4832)59-03-52
 Владивосток (423)249-28-31
 Волгоград (844)278-03-48
 Вологда (8172)26-41-59
 Воронеж (473)204-51-73
 Екатеринбург (343)384-55-89
 Иваново (4932)77-34-06

Ижевск (3412)26-03-58
 Иркутск (395)279-98-46
 Казань (843)206-01-48
 Калининград (4012)72-03-81
 Калуга (4842)92-23-67
 Кемерово (3842)65-04-62
 Киров (8332)68-02-04
 Краснодар (861)203-40-90
 Красноярск (391)204-63-61
 Курск (4712)77-13-04
 Липецк (4742)52-20-81
 Киргизия (996)312-96-26-47

Магнитогорск (3519)55-03-13
 Москва (495)268-04-70
 Мурманск (8152)59-64-93
 Набережные Челны (8552)20-53-41
 Нижний Новгород (831)429-08-12
 Новокузнецк (3843)20-46-81
 Новосибирск (383)227-86-73
 Омск (3812)21-46-40
 Орел (4862)44-53-42
 Оренбург (3532)37-68-04
 Пенза (8412)22-31-16
 Казахстан (772)734-952-31

Пермь (342)205-81-47
 Ростов-на-Дону (863)308-18-15
 Рязань (4912)46-61-64
 Самара (846)206-03-16
 Санкт-Петербург (812)309-46-40
 Саратов (845)249-38-78
 Севастополь (8692)22-31-93
 Симферополь (3652)67-13-56
 Смоленск (4812)29-41-54
 Сочи (862)225-72-31
 Ставрополь (8652)20-65-13

Сургут (3462)77-98-35
 Тверь (4822)63-31-35
 Томск (3822)98-41-53
 Тула (4872)74-02-29
 Тюмень (3452)66-21-18
 Ульяновск (8422)24-23-59
 Уфа (347)229-48-12
 Хабаровск (4212)92-98-04
 Челябинск (351)202-03-61
 Череповец (8202)49-02-64
 Ярославль (4852)69-52-93

<https://autop.nt-rt.ru> || aft@nt-rt.ru

Testmaster RT138-2

Roller brake tester



Application

- Check-in
- Repair and maintenance
- Testing
- General inspection

Optional extra: Digital display



Description:

- 2 galvanized roller sets (split version) for hanging installation (frame required for weighing device, also if retrofitted)
- Motors with planetary gears, enormous brake power
- Wear resistant 205 mm rollers with welded profile surface
- Roller length 1.000 mm, standard drive-on height 40 mm
- Wear resistant and modern electronic strain gauge measuring system with amplifier
- 50 mm rollers in stainless steel
- Prepared for retrofitting of weighing device
- Modular system, all roller sets can be fitted with options
- Compact electric / switchbox, prepared for upgrade
- Drive-over axle load 18 t
- Brake force 36 kN
- Equipped as standard with drive-off system
- Manual / Automatic mode
- Delayed switch-on, start-up monitoring
- Testing program for electronic parking brakes
- Lockable main switch
- Optionally with large easily read analogue display or with PC-connection kit and PC software

Versions:

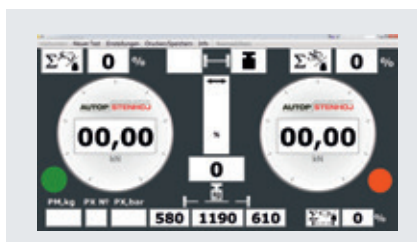
- Galvanized roller sets for hanging installation
- 205 mm rollers with welded profile surface
- 9 kw motors
- Electrical / switch box with motor protection, control electronics, lockable main switch, 20 m pre-cabling

Special equipment on request!

Optional extras:

- Analog brake force indicator with 2 x 400 mm watches
- LED digital display-D3
- PC software display, basic, test lane og office
- Graphic program and special programs for trucks
- PC connection / ASA livestream / mini computer for ASA livestream (for Germany)
- Installation frame for weighing device (also required if retro-fitted)
- Plastic coated rollers
- Extract for roller set
- Low voltage device
- Larger motors
- Reinforced roller set
- 2nd test speed
- Trimming plate, up to 15 t axle load
- Reversible rotation and measuring device
- Automatic 4-wheel detection (patented)
- Regulated 4-wheel drive
- EDOS (Easy drive-out system - patented)
- Roller cover plate
- Remote control
- Pedal force meter
- Weighing device
- Pressure sensors with options
- Pit safety device (Germany)

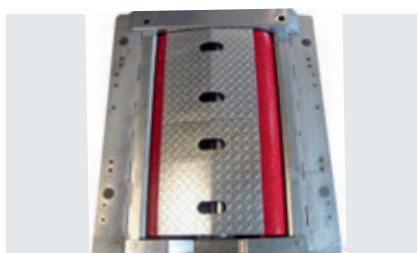
Technical data	
Drive-over load	18,000 kg
Testing speed	2.6 km/h
Motors	2 x 9 kW
Roller diameter	205 mm
Test width	1,000 mm
Test load	at 50% braking 15 t
Fuse	min. 3 x 32 A inert
Power supply	3 x 400 V, N, PE 50 Hz
Brake force	36 kN
Dimensions, analogue display box (W x H x D)	810 x 670 x 70 mm
Dimensions, roller set (L x W x H)	1,220 x 1,045 x 554 mm



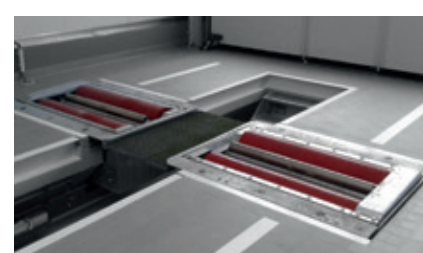
Software Display Basic



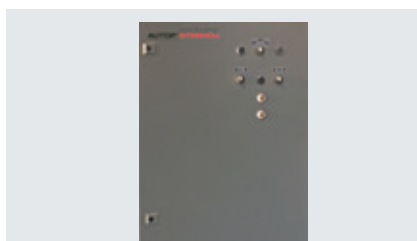
Reinforced roller set



Prism cover



Testmaster RT 138-2



Control box



Sensory rollers of stainless steel

Архангельск (8182)63-90-72
 Астана (7172)727-132
 Астрахань (8512)99-46-04
 Барнаул (3852)73-04-60
 Белгород (4722)40-23-64
 Брянск (4832)59-03-52
 Владивосток (423)249-28-31
 Волгоград (844)278-03-48
 Вологда (8172)26-41-59
 Воронеж (473)204-51-73
 Екатеринбург (343)384-55-89
 Иваново (4932)77-34-06

Ижевск (3412)26-03-58
 Иркутск (395)279-98-46
 Казань (843)206-01-48
 Калининград (4012)72-03-81
 Калуга (4842)92-23-67
 Кемерово (3842)65-04-62
 Киров (8332)68-02-04
 Краснодар (861)203-40-90
 Красноярск (391)204-63-61
 Курск (4712)77-13-04
 Липецк (4742)52-20-81
 Киргизия (996)312-96-26-47

Магнитогорск (3519)55-03-13
 Москва (495)268-04-70
 Мурманск (8152)59-64-93
 Набережные Челны (8552)20-53-41
 Нижний Новгород (831)429-08-12
 Новокузнецк (3843)20-46-81
 Новосибирск (383)227-86-73
 Омск (3812)21-46-40
 Орел (4862)44-53-42
 Оренбург (3532)37-68-04
 Пенза (8412)22-31-16
 Казахстан (772)734-952-31

Пермь (342)205-81-47
 Ростов-на-Дону (863)308-18-15
 Рязань (4912)46-61-64
 Самара (846)206-03-16
 Санкт-Петербург (812)309-46-40
 Саратов (845)249-38-78
 Севастополь (8692)22-31-93
 Симферополь (3652)67-13-56
 Смоленск (4812)29-41-54
 Сочи (862)225-72-31
 Ставрополь (8652)20-65-13

Сургут (3462)77-98-35
 Тверь (4822)63-31-35
 Томск (3822)98-41-53
 Тула (4872)74-02-29
 Тюмень (3452)66-21-18
 Ульяновск (8422)24-23-59
 Уфа (347)229-48-12
 Хабаровск (4212)92-98-04
 Челябинск (351)202-03-61
 Череповец (8202)49-02-64
 Ярославль (4852)69-52-93