

Архангельск (8182)63-90-72
 Астана (7172)727-132
 Астрахань (8512)99-46-04
 Барнаул (3852)73-04-60
 Белгород (4722)40-23-64
 Брянск (4832)59-03-52
 Владивосток (423)249-28-31
 Волгоград (844)278-03-48
 Вологда (8172)26-41-59
 Воронеж (473)204-51-73
 Екатеринбург (343)384-55-89
 Иваново (4932)77-34-06

Ижевск (3412)26-03-58
 Иркутск (395)279-98-46
 Казань (843)206-01-48
 Калининград (4012)72-03-81
 Калуга (4842)92-23-67
 Кемерово (3842)65-04-62
 Киров (8332)68-02-04
 Краснодар (861)203-40-90
 Красноярск (391)204-63-61
 Курск (4712)77-13-04
 Липецк (4742)52-20-81
 Киргизия (996)312-96-26-47

Магнитогорск (3519)55-03-13
 Москва (495)268-04-70
 Мурманск (8152)59-64-93
 Набережные Челны (8552)20-53-41
 Нижний Новгород (831)429-08-12
 Новокузнецк (3843)20-46-81
 Новосибирск (383)227-86-73
 Омск (3812)21-46-40
 Орел (4862)44-53-42
 Оренбург (3532)37-68-04
 Пенза (8412)22-31-16
 Казахстан (772)734-952-31

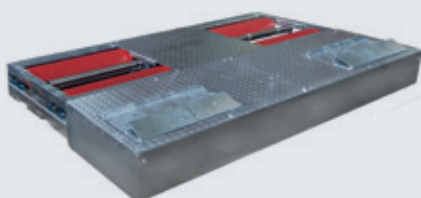
Пермь (342)205-81-47
 Ростов-на-Дону (863)308-18-15
 Рязань (4912)46-61-64
 Самара (846)206-03-16
 Санкт-Петербург (812)309-46-40
 Саратов (845)249-38-78
 Севастополь (8692)22-31-93
 Симферополь (3652)67-13-56
 Смоленск (4812)29-41-54
 Сочи (862)225-72-31
 Ставрополь (8652)20-65-13

Сургут (3462)77-98-35
 Тверь (4822)63-31-35
 Томск (3822)98-41-53
 Тула (4872)74-02-29
 Тюмень (3452)66-21-18
 Ульяновск (8422)24-23-59
 Уфа (347)229-48-12
 Хабаровск (4212)92-98-04
 Челябинск (351)202-03-61
 Череповец (8202)49-02-64
 Ярославль (4852)69-52-93

<https://autop.nt-rt.ru> || aft@nt-rt.ru

Testmaster TL40

Testlane



Application

- Check-in
- Repair and maintenance
- Testing
- General inspection

Description:

- Galvanized, enclosed roller set
- Wear resistant 205 mm rollers with welded profile surface
- Test width: 800 mm to 2,200 mm (optional 800 - 2,800 mm)
- Height adjustment screws
- Wear resistant and modern electronic strain gauge measuring system
- 50 mm sensor rollers in stainless steel
- Prepared for retrofitting of weighing device
- Modular system, all roller sets can be extended to test lanes
- Compact electric / switchbox, prepared for upgrade
- Drive-over axle load 4 t (optional 5 t)
- Brake force 4,5 kN (optional 6 kN)
- Equipped as standard with drive-off system
- Manual / Automatic mode
- Delayed switch-on, start-up monitoring
- Testing program for electronic parking brakes
- Lockable main switch
- Suspension tester Boge system, galvanized bottom group
- Galvanized test plates
- Large easily read analog display
- Optionally with large easily read analogue display or with PC-connection kit and PC software

Optional extras:

- Test width 800 - 2,800 mm
- Foundation frame
- Permanent formwork
- Plastic-coated rollers
- Pneumatic lowering/ lifting device
- Raising kit
- Suspension tester
- Tramming plate
- Manually reversible rotation and measuring device
- Automatic four wheel recognition (patented)
- EDOS (Easy drive-out system - patented)
- Roller cover plate
- Remote control
- LED digital display
- Pedal force meter
- Weighing device
- PC connection & ASA live stream
- Minicomputer ASA live stream
- PC software display, basic, test lane and office

Special equipment on request!

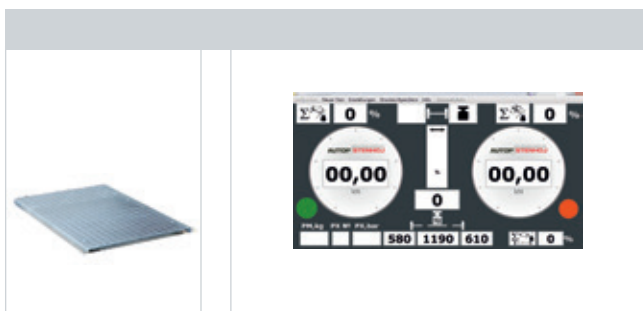
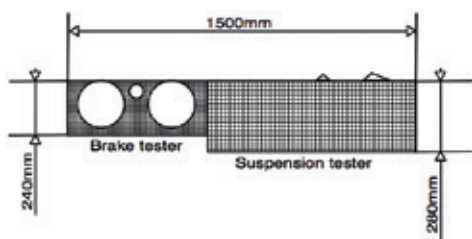
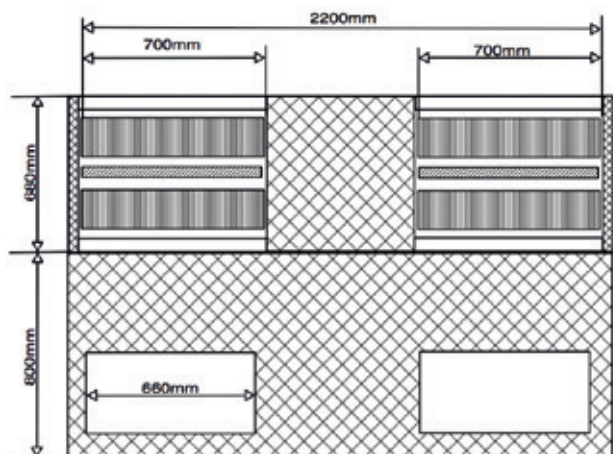
Versions:

- Galvanized roller set and suspension tester
- Wear resistant 205 mm rollers with welded profile surface
- Electrical / switch box with motor protection, control electronics, lockable main switch, 12 m pre-cabled



Technical data - roller set	
Drive-over load	4,000 kg
Test speed	5 km/h
Motors	2 x 3 kW (option 2 x 4 kW)
Roller diameter	205 mm
Test width	800 - 2,200 mm (option 800 - 2,800 mm)
Brake force	4.5 kN (option 6 kN)
Test load	at 50% braking 2 t (option 2,6 t)

Suspension tester	
Drive-over load	4,000 kg
Test load	2.6 t
Motors	2 x 1.2 kW
Fuse	3 x 20 A inert
Power supply	3 x 400 V, N, PE 50 Hz
Dimensions, analogue display (W x H x D)	810 x 670 x 70 mm
Dimensions, roller set (L x W x H)	2,320 x 680 x 240 mm (800 – 2,200 mm) Option 2,925 x 680 x 240 mm (800 – 2,800 mm)
Dimensions, suspension tester (W x L x H)	2,320 x 800 x 280 mm



Архангельск (8182)63-90-72
Астана (7172)727-132
Астрахань (8512)99-46-04
Барнаул (3852)73-04-60
Белгород (4722)40-23-64
Брянск (4832)59-03-52
Владивосток (423)249-28-31
Волгоград (844)278-03-48
Вологда (8172)26-41-59
Воронеж (473)204-51-73
Екатеринбург (343)384-55-89
Иваново (4932)77-34-06

Ижевск (3412)26-03-58
Иркутск (395)279-98-46
Казань (843)206-01-48
Калининград (4012)72-03-81
Калуга (4842)92-23-67
Кемерово (3842)65-04-62
Киров (8332)68-02-04
Краснодар (861)203-40-90
Красноярск (391)204-63-61
Курск (4712)77-13-04
Липецк (4742)52-20-81
Киргизия (996)312-96-26-47

Магнитогорск (3519)55-03-13
Москва (495)268-04-70
Мурманск (8152)59-64-93
Набережные Челны (8552)20-53-41
Нижний Новгород (831)429-08-12
Новокузнецк (3843)20-46-81
Новосибирск (383)227-86-73
Омск (3812)21-46-40
Орел (4862)44-53-42
Оренбург (3532)37-68-04
Пенза (8412)22-31-16
Казахстан (772)734-952-31

Пермь (342)205-81-47
Ростов-на-Дону (863)308-18-15
Рязань (4912)46-61-64
Самара (846)206-03-16
Санкт-Петербург (812)309-46-40
Саратов (845)249-38-78
Севастополь (8692)22-31-93
Симферополь (3652)67-13-56
Смоленск (4812)29-41-54
Сочи (862)225-72-31
Ставрополь (8652)20-65-13

Сургут (3462)77-98-35
Тверь (4822)63-31-35
Томск (3822)98-41-53
Тула (4872)74-02-29
Тюмень (3452)66-21-18
Ульяновск (8422)24-23-59
Уфа (347)229-48-12
Хабаровск (4212)92-98-04
Челябинск (351)202-03-61
Череповец (8202)49-02-64
Ярославль (4852)69-52-93